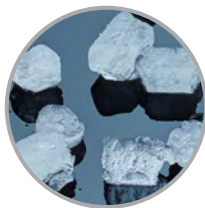




Sealed, maintenance-free bearings ensure maximum reliability and contribute to a long machine life



Available in softer, Original Chewable Nugget Ice or harder, H² Nugget Ice



Nugget Ice



Original Chewable Nugget Ice Hardness Rating: Soft = 74%



H² Nugget Ice Hardness Rating: Hard = 87%

N0622 - 600lb Nugget Ice Machine

Prodigy Plus® Nugget Ice Machine

Features & Benefits

- Available in softer, Original Chewable Nugget Ice and harder, H² Nugget Ice
- Sealed, maintenance-free bearings for reduced preventative maintenance and long-lasting performance
- Stainless steel evaporator and auger for maximum durability
- AutoAlert™ indicator lights for better visibility
- Operational footprint among the industry's smallest
- Unit specific QR code for quick access to service manuals, cleaning guides and warranty history
- Front-breathing - No side clearance required for flexible placement
- Smart-Board™ advanced feature module available for additional diagnostic capabilities
- Optional Vari-Smart™ ice level control allows operators to customize ice levels
- Antimicrobial protection guards internal surfaces between cleanings
- A full range of water- and energy-saving features



24 Hour Volume Production

Original Chewable Nugget

Air Cooled		Remote Cooled		Water Cooled	
70°F/21°C	Air	90°F/32°C	Air	70°F/21°C	Air
50°F/10°C	Water	70°F/21°C	Water	50°F/10°C	Water
664/302	lb/kg	471/214	lb/kg	660/299	lb/kg



24 Hour Volume Production

H² Nugget

Air Cooled		Remote Cooled		Water Cooled	
70°F/21°C	Air	90°F/32°C	Air	70°F/21°C	Air
50°F/10°C	Water	70°F/21°C	Water	50°F/10°C	Water
644/292	lb/kg	466/211	lb/kg	631/286	lb/kg



Modular Bin & Dispenser Options

Model Number*	Dimensions W" x D" x H"	Bin Application		Ship Weight lb/kg
		Capacity lb/kg	Finish	
B322S	22 x 34 x 44**	370/168	Metallic	140/64
B530P	30 x 34 x 44**	536/244	Poly	110/50
B530S	30 x 34 x 44**	536/244	Metallic	150/68
IOD150	22 x 31 x 35	-	Stainless Steel	185/69
IOD200	30 x 31 x 35	-	Stainless Steel	235/107
IOD250	30 x 31 x 35	-	Stainless Steel	260/152

*Contact Scotsman for bin top requirements. **Add 6" Height for bin legs. † Stainless steel with galvanized back & bottom.



Certification



Warranty

- 3 years parts and labor on all components.
- 5 years parts on the compressor.
- Warranty valid in North, South & Central America for commercial installations.
- Contact factory for warranty in other regions.
- Residential Applications: 1 year parts and labor

Scotsman®

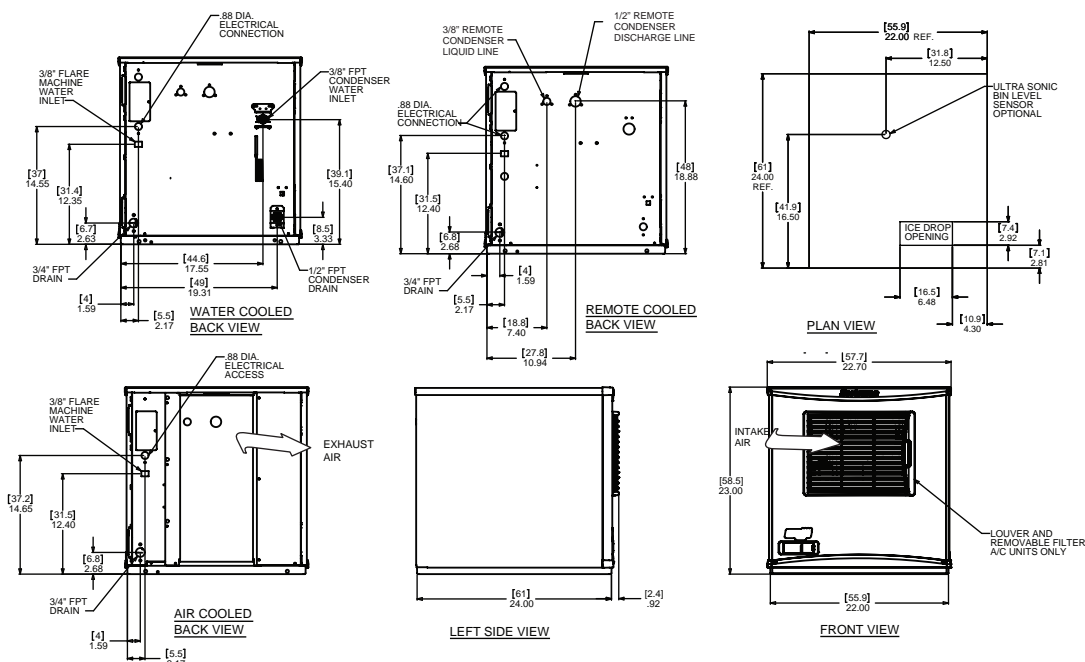
101 Corporate Woods Parkway, Vernon Hills, IL 60061

1-800-SCOTSMAN | Fax: 847-913-9844 | www.scotsman-ice.com | customer.relations@scotsman-ice.com

N0622 - 600lb Nugget Ice Machine

N0622 - 600lb Nugget Ice Machine

Prodigy Plus® Nugget Ice Machine



Specifications

							Water Usage		
Model Number	Condenser Unit	Basic Electrical	Max. Fuse Size	Circuit	Min. Circuit	Energy Consumption	Gallons/100 lb (liters/45.4 kg)		
Nugget Type: Soft or Hard		Volts/Hz/Phase	or HACR Circuit Breaker (amps)	Wires	Ampacity	kWh/100 lb (45.4 kg) 90°F(32°C)/70°F(21°C)	Potable 90°F(32°C)/70°F(21°C)	Condenser 90°F(32°C)/70°F(21°C)	
soft	NS0622AX-1	Air	115/60/1	20	2	14.8	4.12	12.0/45.5	-
	NS0622R-1	Remote	115/60/1	25	2	19.4	4.95	12.0/45.5	-
	NS0622WX-1	Water	115/60/1	15	2	13.2	3.41	12.0/45.5	114/432.1
hard	NH0622AX-1	Air	115/60/1	20	2	14.8	4.10	12.0/45.5	-
	NH0622R-1	Remote	115/60/1	25	2	19.4	5.09	12.0/45.5	120/454.8
	NH0622WX-1	Water	115/60/1	15	2	13.2	3.41	12.0/45.5	-



All Models

Dimensions (W x D x H):

Unit: 22.9" x 24" x 23"
(58.2 x 61.0 x 58.4 cm)

Shipping Carton: 25.5" x 27.5" x 28.5"
(64.8 x 69.9 x 72.4 cm)

Shipping Weight: 180 lb / 82 kg
BTUs per hour: 7,100

Model Number	Refrigerant	Refrigerant Charge (oz)
NS0622AX-1	R290	6.5
NS0622R-1	R-404A	192.0
NS0622WX-1	R290	5.25
NH0622AX-1	R290	6.5
NH0622R-1	R-404A	192.0
NH0622WX-1	R290	5.25



Accessories

Model Number	Description
KVS	Vari-Smart™ Ice Level Control - Program ice bin levels to match ice needs.
KSB	Smart-Board™ Advanced Control - Use additional operational data for fast diagnosis.
KSB-N	Smart-Board™ Advanced Control with Network - Network capable.
KPAS	Prodigy Advanced Sustainability Kit - Includes KVS and KSB - N
ERC111-1	Remote condenser for N0622R, 115V/60/1
BRTE10	10ft (3.0 m) line set, brazing required
BRTE25	25ft (7.6 m) line set, brazing required
BRTE40	40ft (12.2 m) line set, brazing required
BRTE75	75ft (22.9 m) line set, brazing required

Scotsman recommends all ice machines have water filtration. See Scotsman water filter specification sheet for details.



Operating Requirements

	Minimum	Maximum
Air Temperatures	50°F (10°C)	100°F (38°C)
Water Temperatures	40°F (4.4°C)	100°F (38°C)
Remote Cond. Temps	-20°F (-29°C)	120°F (49°C)
Water Pressures	20 PSIG (1.4 bar)	80 PSIG (5.5 bar)
Electrical Voltage	-5%	+10%

Specifications and design are subject to change without notice.

N0622 - 600lb Nugget Ice Machine